

Extract from a booklet about the Interior of 16 Carlton House Terrace
Published by the Crown Estate, 1999



No. 16 Carlton House Terrace

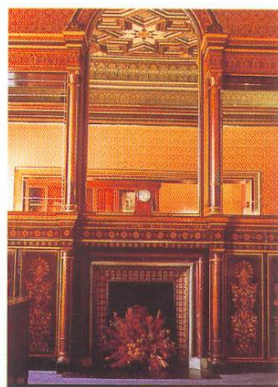
Although built to Nash's design in 1828, No. 16 is most notable for the redecoration commissioned by the Victorian industrialist and entrepreneur Sir Samuel Peto in 1863. The speed with which the property then changed hands has led to the theory that Peto acted merely as a developer / speculator, and the interiors are actually the choice of Alfred Morrison who acquired the lease in 1866.

Owen Jones, the designer commissioned to do the work, was best known for being co-advisor on the interiors of the Crystal Palace where he devised the colour schemes, and author of the book, "The Grammar of Ornament". This book, still in print today, is considered a landmark text on design principles. Jones drew heavily on Islamic designs for his commission at No. 16 and was clearly influenced by the Alhambra Palace in Andalusia, Spain.

The restoration of Jones's original colour schemes was achieved through scrapes, paint analysis and painstaking research by the architect, Hunter and Partners, with help from English Heritage and the Victoria and Albert Museum.

The project was awarded a Europa Nostra Diploma of Merit for its contribution to the preservation of Europe's heritage in 1991.

A GUIDE TO THE INTERIORS



FIRST FLOOR

All the rooms on this floor are 24 ft high.

CONFERENCE ROOM

This room is used for meetings and small functions. The room connects with the adjoining Board Room through new double doors installed in the 1989 refurbishment, allowing the rooms to be used separately or as one large entertaining area. The furniture is modern and was specified by the architects as part of the refurbishment.

ITEMS TO NOTE

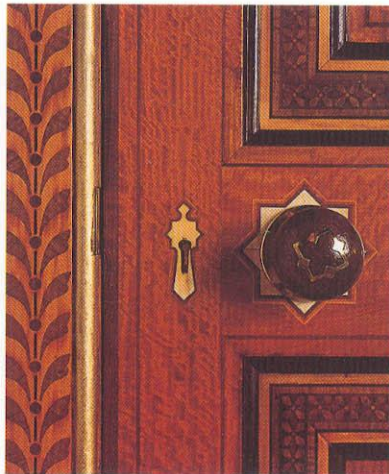
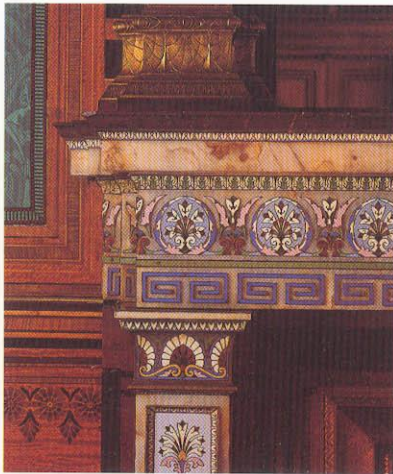
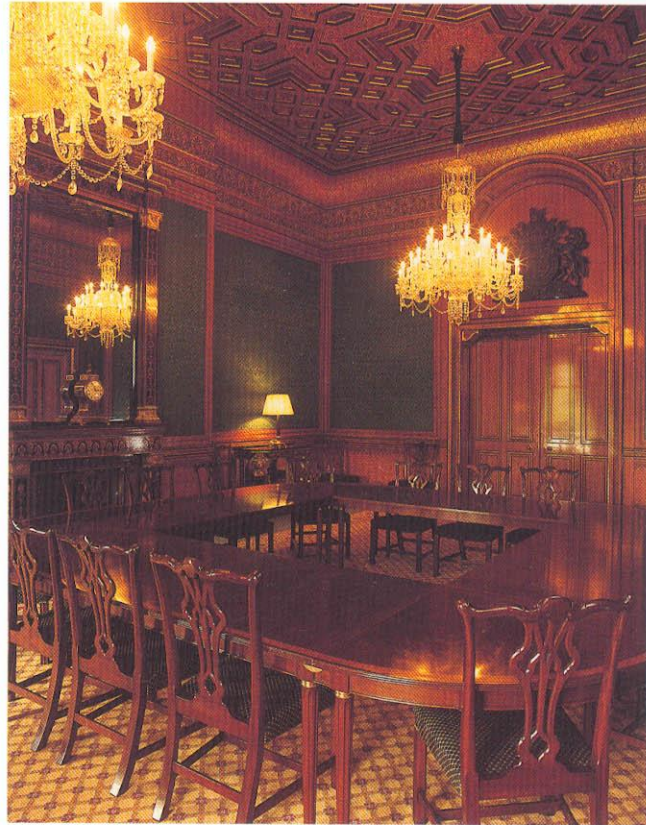
Patterned ceiling.
Venetian chandelier.
Enamelled fireplace.

BOARD ROOM

This is the principal entertaining room used by the Commissioners for meetings and functions.

ITEMS TO NOTE

Two 19th century crystal chandeliers.
Patterned ceiling.



OPPOSITE PAGE:
*The Conference
Room in No.16.*

TOP:
*The Board Room
in No.16.*

BOTTOM LEFT:
Fireplace detail.

BOTTOM RIGHT:
*Inlay work on
a door.*

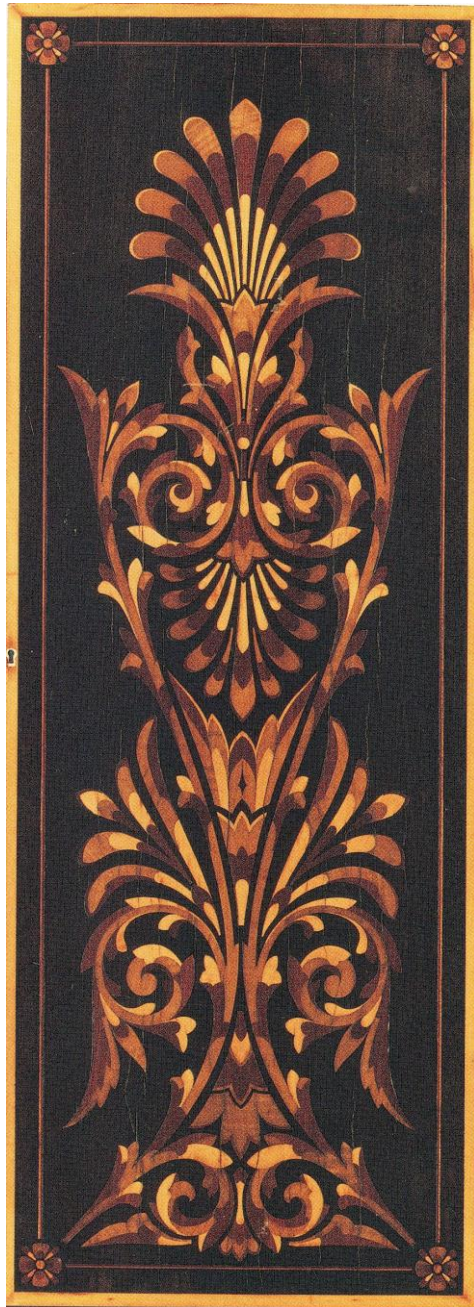


Pair of armchairs designed by Owen Jones (1809-1874) and made by Jackson and Graham.
Circa 1867-70.

Provenance :- Alfred Morrison (1821-1897), 16 Carlton House Terrace, London.

It is very possible that these armchairs were exhibited in the 1874 *Catalogue of Works by the Late Owen Jones*, an exhibition within the London International Exhibition of that year. No. 200 in the exhibition was 'Arm Chair (Drawing Room). Exhibited by Mr. Alfred Morrison' and no. 201 was 'Arm Chair (Hall). Exhibited by Mr. Alfred Morrison'.

These armchairs were sold in 1997 by Harris Lindsay and H. Blairman & Sons to the Carnegie Museum of Art, Pittsburgh and the Art Institute of Chicago.



Door Panel designed by Owen Jones (1809-1874) and made by Jackson & Graham.
Circa 1867-70.

37⁵/₈" x 14" (95.5cm x 35.5cm).

Provenance :- Alfred Morrison (1821-1897), 16 Carlton House Terrace, London.

Now in the Minneapolis Institute of Art. A similar panel is in the Victoria & Albert Museum. Identical panels survive in the house.



Centre Table designed by Owen Jones (1809-1874), and made by Jackson & Graham. *Circa 1867-70.*

Height 28" (71cm).

Diameter 54" (1,37m).

Provenance :- Alfred Morrison (1821-1897), 16 Carlton House Terrace, London.
Currently in a private collection.

This table is *en suite* with a sofa in an English private collection which has a pencil inscription with Alfred Morrison's name. The sofa is possibly no. 73 in the 1874 *Catalogue of Works by the Late Owen Jones*, an exhibition within the London International Exhibition of that year, 'Sofa in Inlaid Woods. Designed for Mr. Alfred Morrison'. Because of this connection with Morrison, and the great similarity of the inlaid work with that of the surviving inlay of 16 Carlton House Terrace, this table must have been made for the house by Jackson and Graham (see H. Blairman & Sons Ltd., *Furniture and Works of Art*, 1994, no. 16).

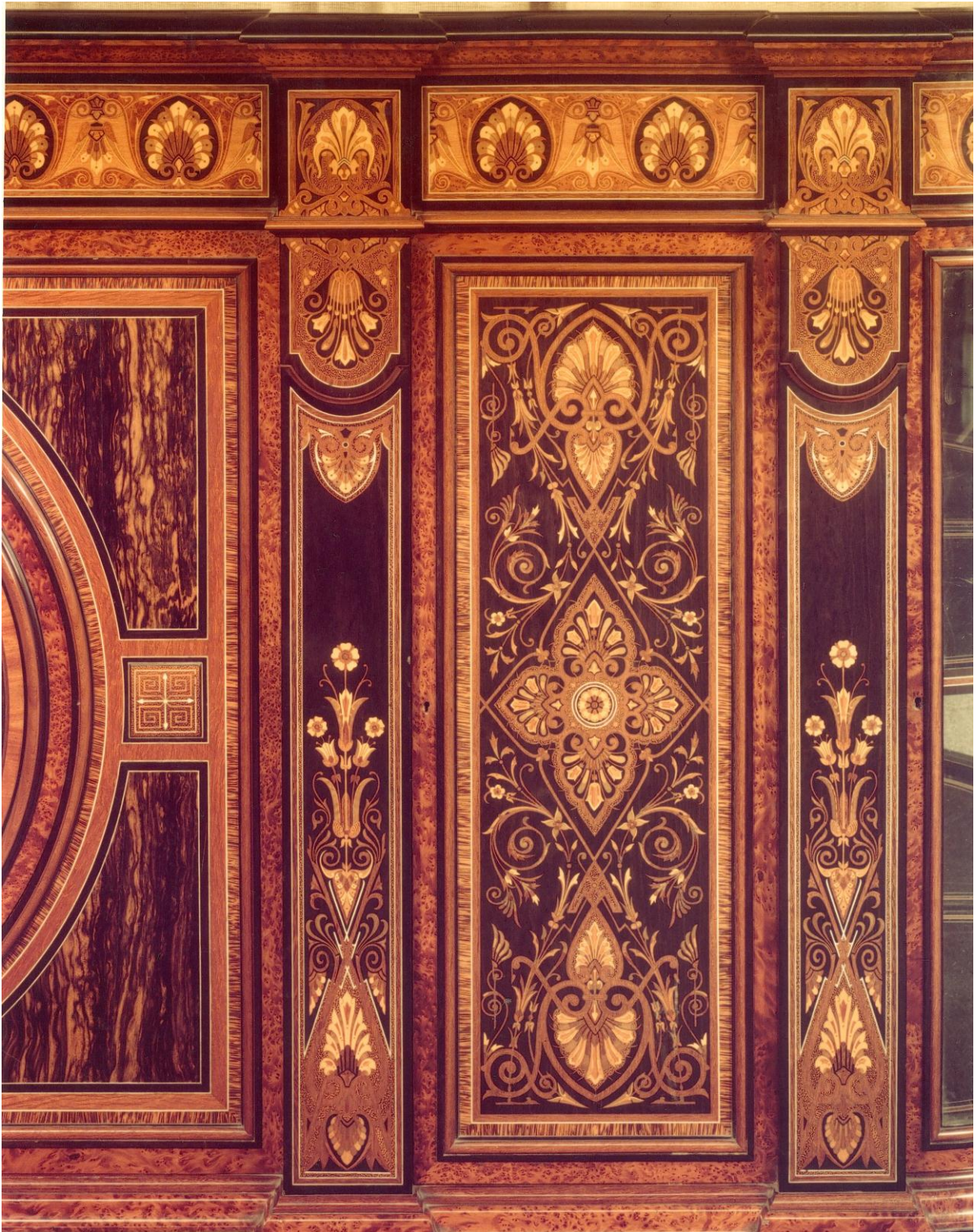


Side Cabinet designed by Owen Jones and made by Jackson and Graham. *Circa 1870-75.*

Provenance :- Made for Henry Arthur Brassey (1840-1891). The central monogram on the main door of the cabinet is 'HAB' (the 'B' doubled for symmetry). Brassey was a major client of Owen Jones, both at his London house in Park Lane and at Preston Hall, Kent. The inlay of this cabinet is very similar to that on documented furniture designed by Owen Jones and made by Jackson and Graham, including furniture made for Alfred Morrison's London house in Carlton House Terrace, but a crucial difference is that this present cabinet includes ivory stringing in the marquetry, whereas the furniture and interiors for Carlton House Terrace were solely of inlaid wood.

Fitzwilliam Museum, Cambridge.

Sold to the museum by Phillips & Harris (now Harris Lindsay) in 1980.



Detail of the marquetry of the Fitzwilliam Museum side cabinet.



Owen Jones.

From the *Illustrated London News*, April 1874.